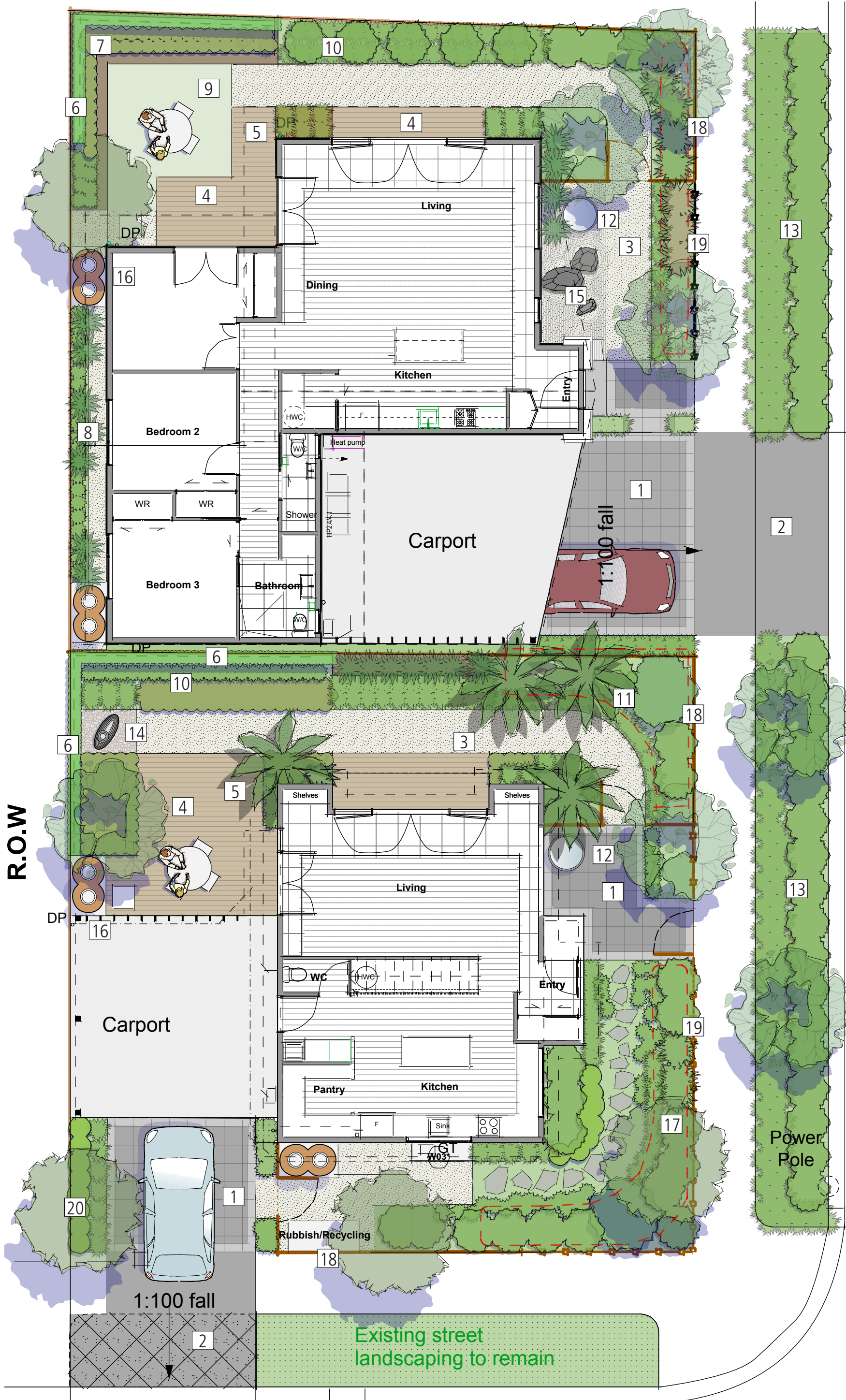




Homestar 9 Residences

ADDINGTON, CHRISTCHURCH





LEGEND:

- 1 PERMEABLE PAVING
Porus Pavers
Natural pave
Compressed Earth Pavers
- 2 ASPHALT PAVING PATCHES
- 3 COMPACTED GRAVEL PATHWAY
- 4 TIMBER DECKING
Adobo TMW timber
- 5 ACCESSIBLE GRADE TRANSITION
- 6 GREEN WALL TRELLIS
- Espaliered fruit trees
- Hardy Kiwi on south facing fence
- 7 RAISED PLANTER
With timber seating edge
planted with herbs & edibles
- 8 FERN & SHADE GARDEN
- 9 GREEN PATIO AREA
Native groundcover turf replacement
or recycled concrete pavers set in
groundcover.
- 10 EDIBLE GARDEN AREA
Dwarf fruit trees, & ornamental shrubs
and perennials with edible fruit, roots
or foliage
- 11 TROPICAL PLANTING THEME
Large leafed native plantings with
bamboo and Nikau palms to provide a
lush visual effect.
- 12 WATER FEATURE POT
- 13 BOULEVARD PLANTING
Grasses & Hebes consistent with
adjoining CCC plantings. Option to add
two specimen trees.
- 14 SCULPTURAL FOCAL POINT
Pondless bubble rock w/ Solar pump.
- 15 RAKED GRAVEL ZEN GARDEN
BED W/LOCAL BOULDERS
Use same gravel material as adjacent
pathway.
Locally sourced boulders or art pieces -
could look for artistic pieces of rubble as
homage to Christchurch earth quakes.
- 16 RAINWATER TANKS FOR
GARDEN IRRIGATION
- 17 PLANTED SWALES
Planting beds contoured to form
shallow swale that will promote
capture and infiltration of rainwater
into ground.
- 18 SOLID FENCE
- 19 PERMEABLE FENCE
- 20 EXISTING TREE



LANDSCAPE DESIGN SUMMARY:

PERMEABLE PAVED SURFACE AREA (EXCLUDING CARPORT) = 28 SQ.M
 GRAVEL SURFACE AREA= 30 SQ.M
 DECKING SURFACE AREA = 12.5 SQ.M
 TURF/TURF REPLACEMENT = 12 SQ.M
 PLANTING BEDS = 39 SQ.M
 BOULEVARD PLANTING BED (OFFSITE) = 22 SQ.M

EDIBLE PLANT SPECIES USED THROUGHOUT PLANTING SCHEME WITH APPROXIMATELY 6 SQ.M DESIGNATED ON NORTH SIDE OF BUILDING FOR EDIBLE HERBS & SHRUBS.





PERMEABLE PAVED SURFACE AREA (EXCLUDING CARPORT) = 26 SQ.M
 GRAVEL SURFACE AREA = 35 SQ.M
 DECKING SURFACE AREA = 26 SQ.M
 PLANTING BEDS = 89 SQ.M
 BOULEVARD PLANTING BED (OFFSITE) = 32 SQ.M

EDIBLE PLANT SPECIES USED THROUGHOUT PLANTING SCHEME WITH APPROXIMATELY 4 SQ.M DESIGNATED ON NORTH SIDE OF BUILDING FOR EDIBLE HERBS & SHRUBS.





Nikau Palm



Hosui & Nijiseiki Nashi Double Graft (espalier)



Dwarf Pear Garden Belle™



Dwarf Apple Blush Babe™



Alectryon excelsus Titoki



Fruiting Plum (espalier)



Quince



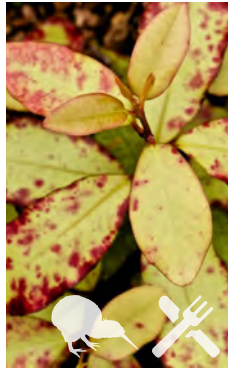
Dicksonia squarrosa Wheki



Aristotelia serrata Wineberry, Makomako



Griselinia 'Canterbury'



Pseudowintera colorata Horpito



Matapouri Blue Totara



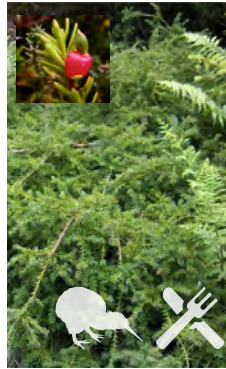
Meuhlenbeckia astonii



Pittosporum 'Golfball'



Hebe Spp.



Podocarpus_nivalis Mountain Totara



Macropiper excelsum Kawakawa



Bambusa gracilis Graceful Bamboo



Chilean Guava



Acca sellowiana Fijoa



Sophora prostrata Prostrate Kowhai



Phyllostachys nigra Black Bamboo (spreading)



Chionochloa rubra Red Tussock



Rengarenga Lily



Phormium Pink Panther Red Flax, Harekeke



Astelia 'Westland'



Hakonechloa macra 'All Gold'



Phormium 'Chocomint' Dwarf Flax spp.



Poa Cita Silver Tussock



Chionochloa Flavicans Miniature NZ Toitoe



Leptinella spp.



Polystichum richardii Shield Fern / Pikopiko



Asplenium bulbiferum Hen & Chick Fern/ Mouku



Red Veined Sorrel (annual)



Rosemary



Rhubarb



Chives



Purple Sage



Rainbow Chard



Artichoke



Actinidia_kolomikta Hardy kiwi - (Shade Tolerant)



Climbing Hydrangea (Shade Tolerant)

PLANT ATTRIBUTES KEY:



NZ NATIVE

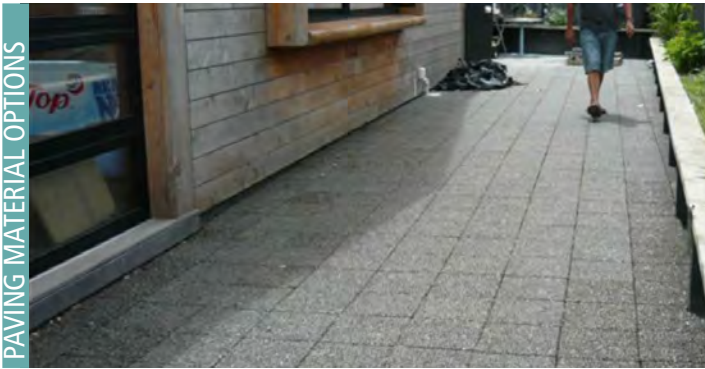


EDIBLE FRUIT, FOLIAGE OR ROOTS*



MEDICINAL PROPERTIES*

* Plants noted as having edible or medicinal properties may require special preparation to allow safe consumption or use.



Permeable Solutionz Resin Bound Pavers

Ashurst pavers shown @ \$94 per sq.m excl. shipping, sub base & installation. Pedestrian Dimensions 400x400x50mm. Trafficable dimensions 230x115x50mm
<http://permeablesolutionz.co.nz/products>

- Notes:
- Manufactured in Auckland, no Co2 or VOC emissions during manufacture
 - Discounted rates available for orders over 200 sqm.
 - Suit driveway & paved entry way. Recommended that more economic exposed aggregate concrete could be used in carport areas.



NaturalPaving (reinforced gravel)

~\$35 per s.qm + Gravel & subbase
<http://www.naturalpaving.co.nz>

- Notes:
- Manufactured in China from Virgin PE plastic.
 - Filled with 8-14mm, clean rounded pebble for comfort or crushed irregular stone to maximum stability.
 - Can be cleaned by hosing off surface to wash dust into pebbles , can empty lift and replace units if required
 - Suit driveway and pathway use though long term likely to be dirt and dust accumulation leading to weed growth. Rounded pebble fill may not be as wheelchair friendly as crushed fill or paver products



Firth Porus Pave

<http://www.firth.co.nz/product-information/landscaping/ecopave-system/poruspave.aspx>

- Notes:
- Contacted steve.crossland@firth.co.nz to investigate sponsorship opportunities. He was going to check with Christchurch marketing folks but no response yet.
 - Standardised product, readily available.
 - Concrete unit paver so higher Co2 footprint than other options



Walker Earth Compressed Earth Pavers (reinforced gravel)

Pedestrian pavers standard units are 200x200x60mm priced at \$3 per piece = 20 per sqm = \$60 per/sqm.
Manufactured to order so lead time 4-5 weeks or more and would have to be confirmed prior to ordering.
<http://www.walkerearth.co.nz>

- Notes:
- Manufactured in Amberly from locally sourced soils with 7% cement and a silicon admixture for improved durability.
 - Low CO2 production in manufacture.
 - Suit paved entry way or replacing deck areas shown in plan.



Adobo Vulcan Thermally Modified Decking

Vulcan uncoated Decking approx \$50 per sqm + \$150 per cu.m shipping cost.
Sand + Decking Oil prefinished \$70 per sqm. (AQC treated)
Willing to look at discounted rate for PR exposure.
<http://abodo.co.nz/>

- Notes:
- Manufactured in Taranaki from locally sourced timber.
 - Vulcan Decking totally benign - no chemical preservatives used.
 - Suit decking areas and could investigate use for fencing.



BEEHIVE RENTAL

Approach local beekeepers to see if they are willing to place a beehive on the south west corner of the site for the year the showhome is open in exchange for signage opportunity on the hive.
Could be dressed up to make it look like a cool urban structure in the garden.



RECYCLED CONCRETE FLAGSTONES

Also referred to as 'urbanite' set blocks of broken concrete slab as stepping stones or patio surfacing. This can be stained using various washes such as iron sulphate to provide a different hue. Photo above shows concrete set on Leptinella spp. groundcover.

Groundcover available from nomow.co.nz



HUNGRY BIN COMPOST SYSTEM

Portable no-odour worm composting system can digest up to 3kgs of organic waste per day. \$345 for complete kit including worms.

<http://www.hungrybin.co.nz/buy/buy-hungry-bin-products/>